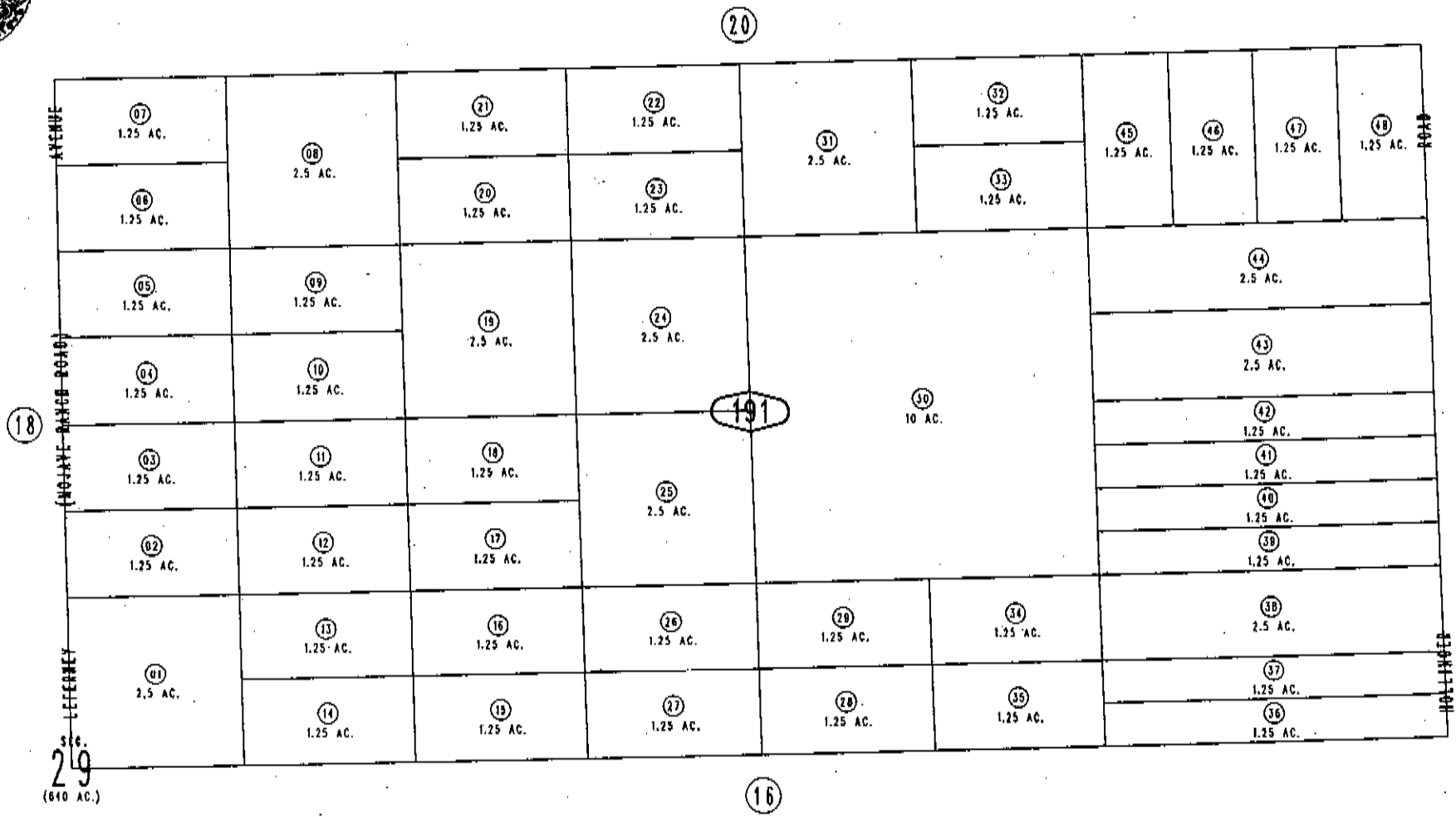
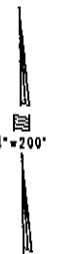


THIS MAP IS FOR THE PURPOSE
OF AD VALOREM TAXATION ONLY.

S.1/2, N.E.1/4 Sec.29, T.1N.,R.7E., S.B.B.&M.

Morongo Unified
Tax Rate Area
94004

0604-19



March 2005

Assessor's Map
Book 0604 Page 19
San Bernardino County

REVISED