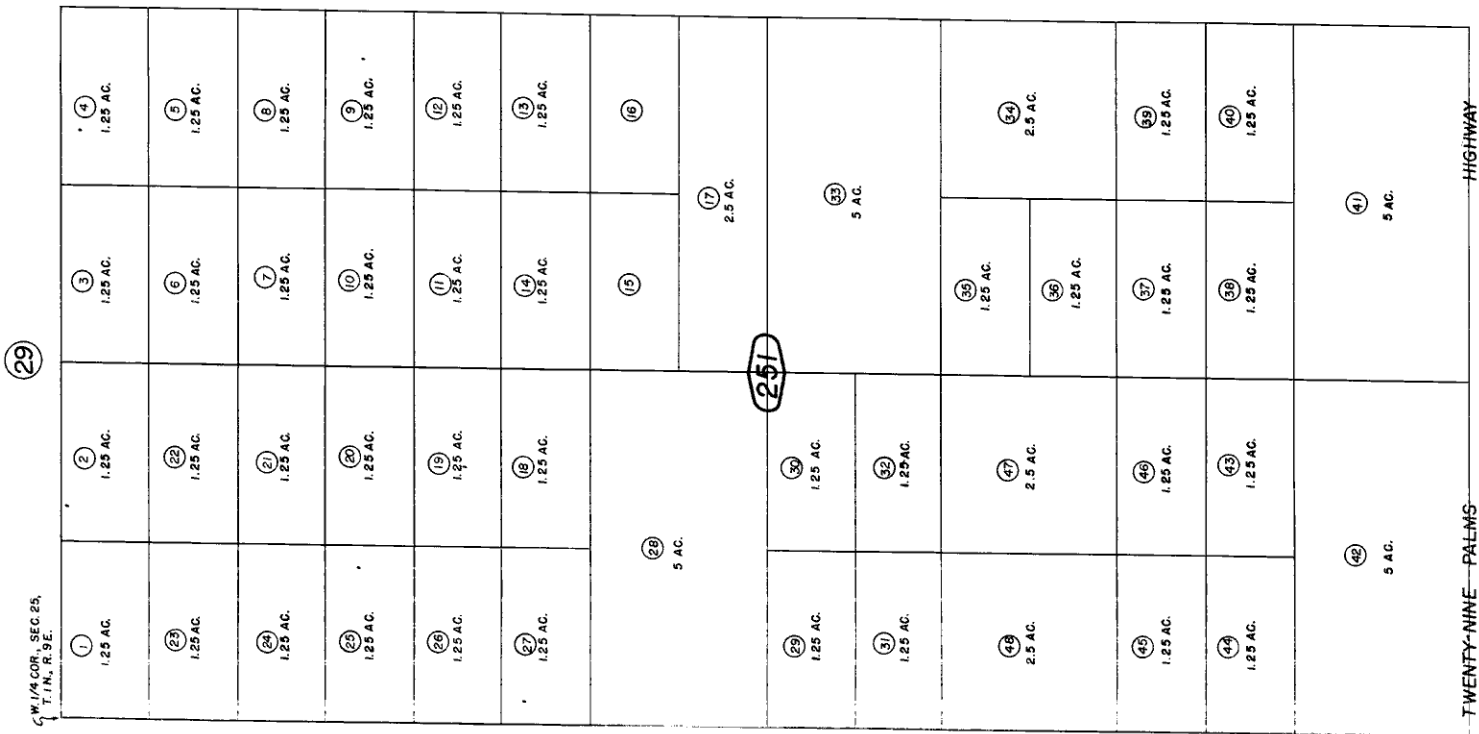
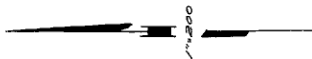




W. 1/2, SW. 1/4, Sec. 25, T. 1N, R. 9E., S.B.B. & M.

City of Twentynine Palms 624-25
Tax Rate Area
19001



W. 1/2 COR. SEC. 25,
T. 1N, R. 9E.

TWENTY-NINE - PALMS

HIGHWAY

Note-Assessor's Blk & Lot
Numbers Shown in Circles

Assessor's Map
Book 624 Page 25
San Bernardino County

REVISED
6/23/94 RR
3/16/97
4/29/92 CC
4/12/95 JGS