



S.1/2 Fractional Sec.19 T.2N.,R.8E., S.B.B.&M.

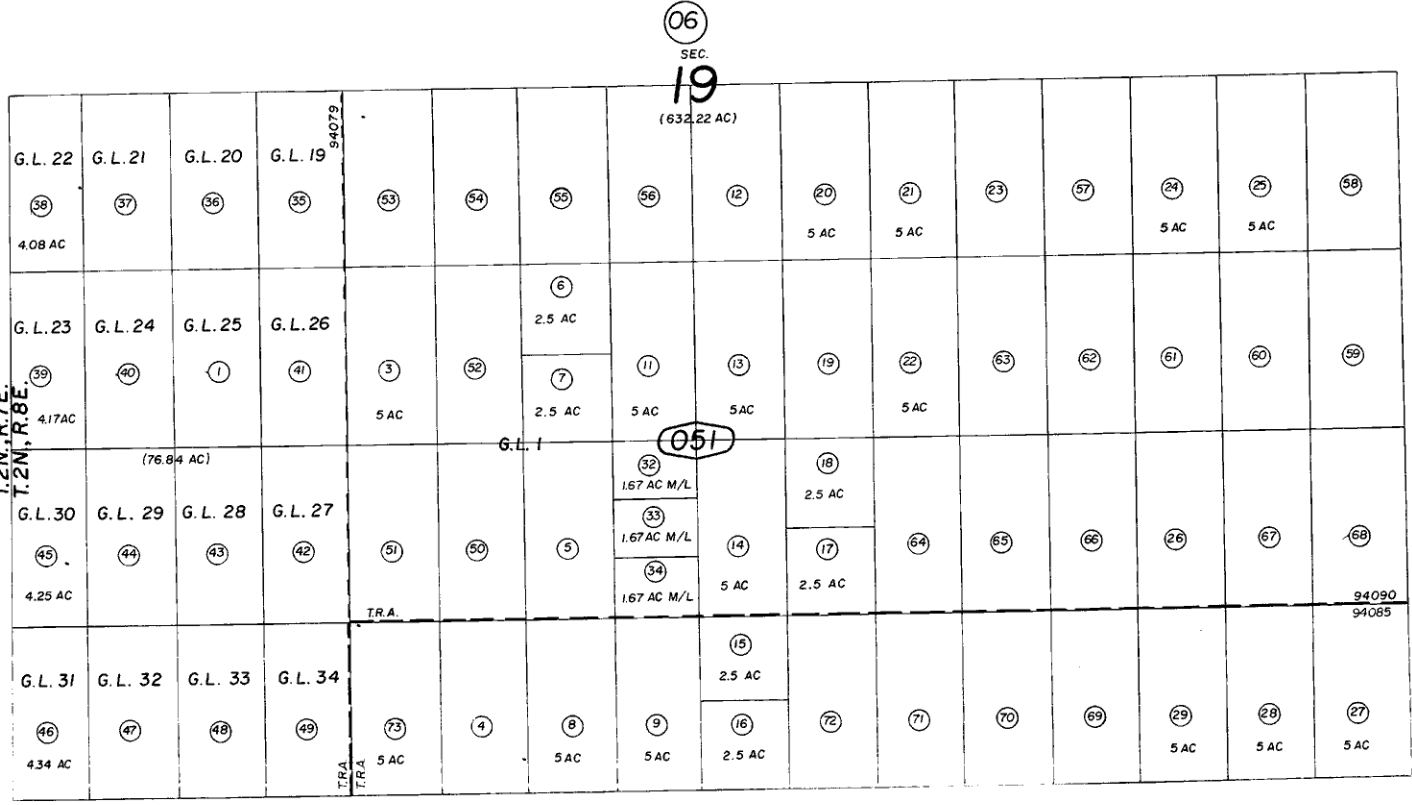
Morongo Unified Tax Rate Area 94079, 94085, 94090

633-05



632/16

T.2N., R.7E.  
T.2N., R.8E.



OCT 1970

Assessor's Map Book 633, Page 05 San Bernardino County

REVISED